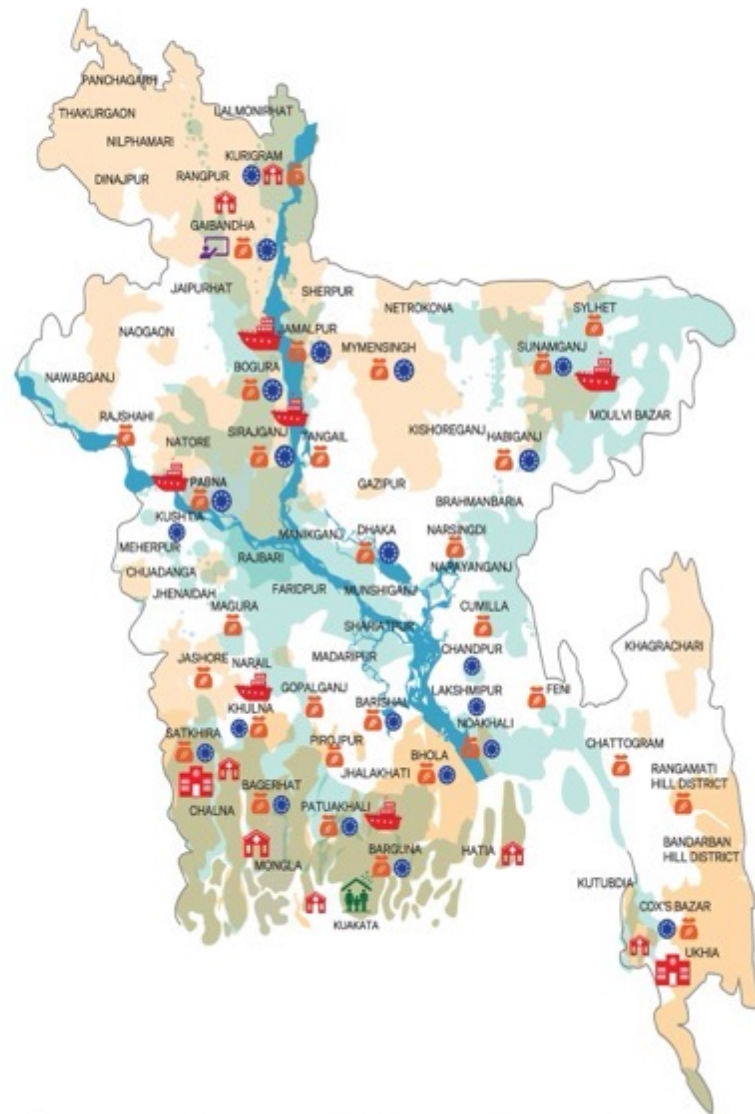


Intervention areas juxtaposed over poverty-stricken and climate-impacted regions of Bangladesh



Mission

From Bangladesh, a country facing the most pressing of humanity's challenges, we develop scalable solutions to strengthen marginalized communities and empower people to transform their lives and reach their full potential.

Legend

-  Floating Hospital
-  Mainland Hospital
-  Emergency Relief
-  Regular Intervention Areas

-  Cyclone Shelter
-  Training Centre
-  Static Clinics

Vulnerable regions of Bangladesh

-  Most poverty afflicted areas
-  Most climate impacted areas
-  Most remote areas

Rationale

Established in 2018, the climate-resilient Friendship Hospital Shyamnagar (FHS) has been designed to:

- ✓ withstand climate impacts,
- ✓ reduce its environmental footprint
- ✓ deliver quality care to vulnerable communities.



Objectives & activities

Main objectives are :

- ✓ Strengthens health care delivery for the vulnerable communities
- ✓ protects patients and staff from the impact of climate change
- ✓ Reduces healthcare costs over time
- ✓ Improve energy efficiency and restore the ecosystem

Key interventions:

- ✓ Constructed a climate-resilient infrastructure, the Hospital
- ✓ Decentralization strategy for operating the hospital
- ✓ Addressing preventive health care delivery
- ✓ Clean and reliable energy source



Impact & results – infrastructure & services

Unique climate-resilient infrastructure,
Hospital winner of the RIBA international prize 2021:

- ✓ locally made bricks & water as its chief starting point (rainwater harvesting and cooling the hospital).
- ✓ spacious corridors and wards made easy **cross ventilation**, airy for breathing and **daylight passing**.
- ✓ preventive health care sessions through an outreach program

Access to quality health care services for the vulnerable communities:

- ✓ Since 2018, FHS has provided 403,846 services to 211,953 patients
- ✓ Since 2020, FHS provided Cervical Cancer Screening of 2743 women.
- ✓ In 2025: 12,394 healthcare services through mHealth apps & 48 telemedicine consultations.

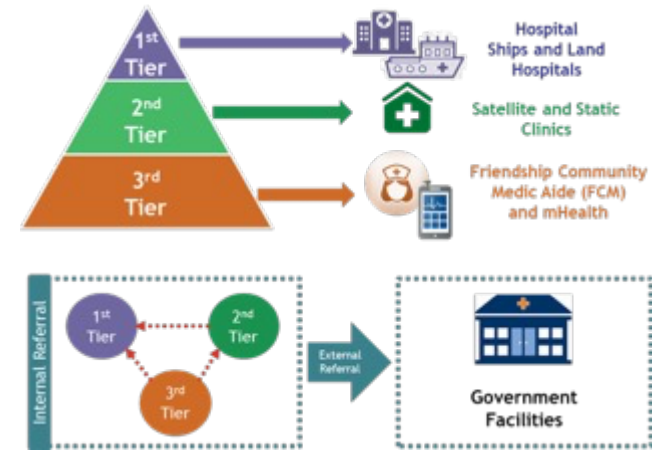


Impact & results



Impact & results - Decentralization strategy

- ✓ Developing this hospital to work independently under the locally appointed Head of the hospital: reduces frequent monitoring visits from distant without affecting the organization's mission.
- ✓ Implementing **procurement policy for uninterrupted supply** of medicines and consumables.
- ✓ Implementing a three-tier health care model



Impact & results – Energy and ecosystems

- ✓ **Clean and reliable energy:** Solar + battery storage; energy efficiency (lighting, equipment); reduced fossil fuel dependence.
- ✓ **Sustainable water and natural resources:** Rainwater harvesting; ponds & fish farming; tree planting; mangrove afforestation.
- ✓ **Low-carbon and sustainable operations:** Low-carbon transport (bikes, e-vehicles); paperless & online meetings; reusable materials (steel, glass, jute, cloth).
- ✓ **Sustainable healthcare waste management:** Waste segregation; safe disposal technologies; reduced disposable waste.





Conclusion & transferable lessons

Decentralised, accessible, and affordable healthcare for the climate impacted communities

This model highlights the **importance of combining resilient infrastructure, community-based action, and strong institutional leadership to build climate-resilient systems**

