



Climate Action
Accelerator



Health programme

WEBINAR Planetary Health West
Africa – 13th of May 2025



Outline

1. Strategy overview
2. Pilot projects
 - Focus on CRESH Ngouri and SENEYA
3. Capacity development
4. Amplification



Climate Action
Accelerator

2025 STRATEGY

Demonstrate impact & consolidate reputation



Operating model for health

Our acceleration model



Pilot projects



- **Pilot Projects** to integrate **resilient & sustainable** (low carbon) **service delivery** whilst **improving population health**
- **Transversal** (health facility) and **Vertical** programmes (e.g. Food resilience)

Capacity development



- **Capitalise on pilot learnings** to build capacity of health agencies through **knowledge transfer and mentoring**
- **Open access tools / resources** (e.g. VCA and CRESH operational toolkits) endorsed by WHO

Amplification



- **Dissemination of tools and experiences** in scientific and health policy communities
- **Public policy engagement** to **influence MoHs, donors & systemic players e.g. GAVI** and promote strategic collaboration



Climate Action
Accelerator



2025 PILOT PROJECTS

CRESH Ngouri in Chad & SENEYA in Senegal

Our CRESH pilots



Climate-Resilient and Environmentally Sustainable Health Care Facilities (CRESH). Our projects:

1. **Adaptation plan:** develop a healthcare service that adapts to climate-related health challenges.
2. **Implement:** use climate-smart and low-carbon technologies to minimize environmental impact.
3. **Impact:** shift towards low-carbon healthcare & meet both current and anticipated future health needs.

Our CRESH pilots

District Hospital of Ngouri, Chad
2023 – Ongoing



Primary Healthcare Network in
Cederberg District, South Africa
2024 – Ongoing



Three primary health centres in Cox's
Bazar, Bangladesh
10/2024 – VCA ongoing



Terre des hommes
Helping children worldwide.

Three health centers in
Sédhiou, Senegal
2025 – VCA ongoing



Developing a Climate-Resilient Hospital in Ngouri, Chad



- Worsening food insecurity and changes in infectious disease epidemiology due to increasing temperatures, erratic rainfall and intermittent flooding
- Hospital struggles to manage malnutrition and malaria peaks; regular loss of electricity / oxygen.
- Adaptation plan prioritizes resilient energy and oxygen infrastructure, community interventions to reduce malaria and malnutrition, blood bank reinforcement, and disaster management training
- Interventions funded and implemented in a step-wise manner – interim evaluation March 2025



OneHealth: Community and Health Service Resilience in Seneya, Senegal

- Strengthening community and health service resilience in the face of floods, heatwaves and deforestation
- Multi-sectoral collaboration to cover the OneHealth disciplines” (Agronomes et Vétérinaires Sans Frontières, SOLTHIS, CAA)
- Community resilience work led by community partners Green Sedhiou and Faculty of Anthropology
- Comprehensive monitoring frame to measure resilience outcomes at three levels: systemic, facility and community.
- Assessment process due to start in Jan 2025





Climate Action
Accelerator



2025 CAPACITY DEVELOPMENT

Tools, Academy, Pilot South Africa & AFD

CRESH Toolkits

Health Service Level Climate Vulnerability and Capacity Assessment [Published]

a comprehensive mixed methods diagnostic toolkit that generates a prioritized, implementable health facility adaptation plan.

Monitoring and evaluation toolkit: monitoring frame and cost-impact modelling [Internal]

a repository of monitoring and performance indicators to measure the impact of the climate solutions / adaptation plan.



Toolbox and pilot in South Africa

Transforming healthcare systems and services into climate-resilient and low-carbon models

- ✓ **TOOLBOX** and **OPERATIONAL METHODOLOGY**
- ✓ **CAPACITY DEVELOPMENT** to leaders of a healthcare system

Target audience: healthcare **management teams & hospital directors.**



Toolbox

Transform healthcare systems and services into climate-resilient and low-carbon models

[Search](#)

Focus



Project Cycle Phase



Categories



72 results

Facility ×

Assessment ×

Baseline Analysis ×

Carbon Footprint Tool ×

Monitoring & Evaluation ×

Finance ×

Buildings ×

Infrastructure ×

Technology ×

Health Service Provision ×

Clear filters



Search

Focus



Project Cycle Phase



Categories



Refine Results

Sort By:



<< < Page 1 of 6 > >>

Geographical Focus



Accessibility



Language



Climate Vulnerability and Capacity Assessment (VCA)

This document describes a methodological approach developed by the Climate Action Accelerator (CAA) to deliver a Climate VCA at the level of a single hospital or primary care facility in low/medium resource & fragile settings. The CAA Climate VCA is a rapid, mixed methods, multi-stakeholder assessment process consisting of 5 stages, designed to be used by health ...

[Read more](#) ▾

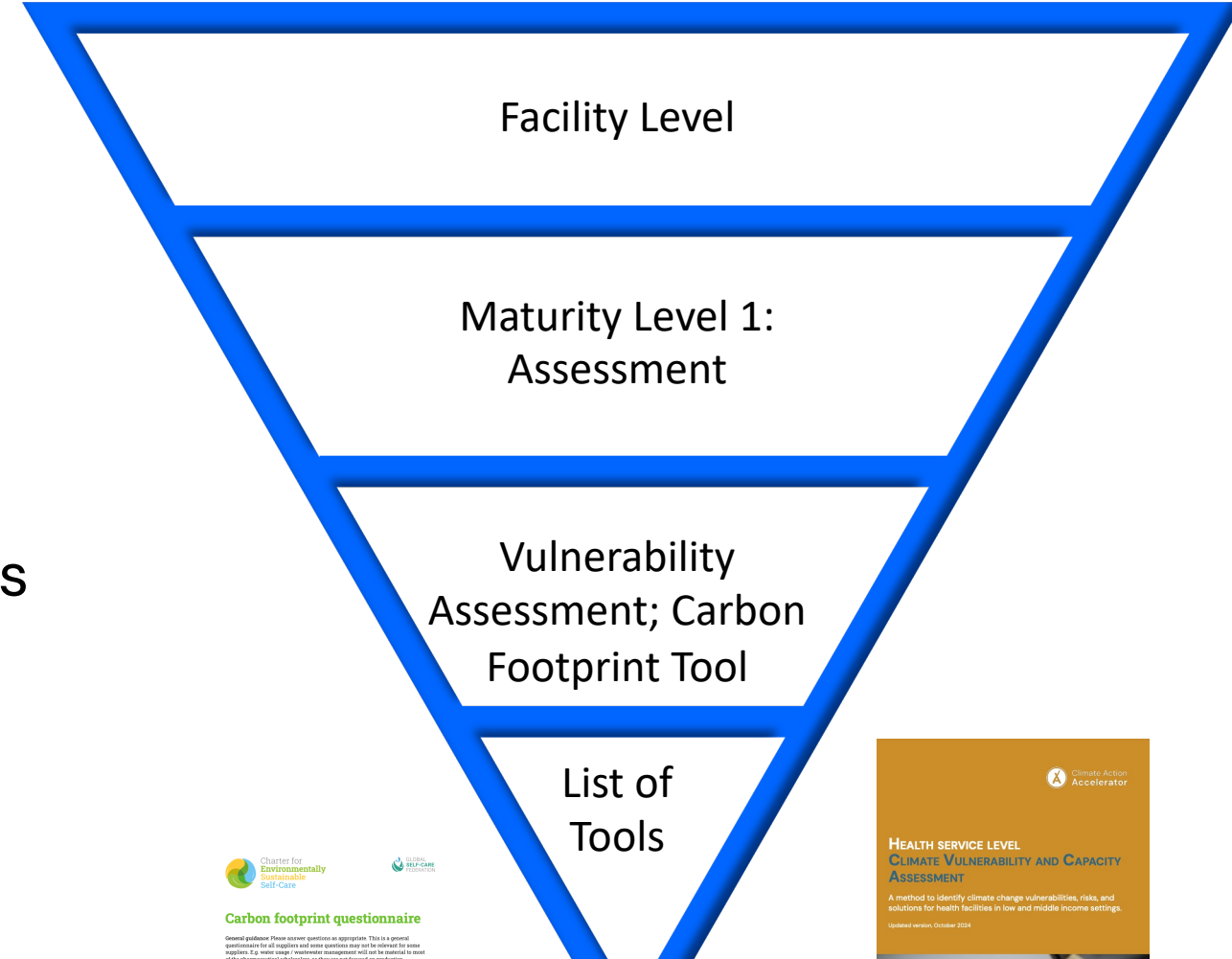
Toolbox Filter Options

User Cases 1

Position: Hospital Director

Needs:

1. to understand the health facility's vulnerabilities and capacities in relation to the effects of climate change.
2. to plan priority climate actions



Carbon footprint questionnaire

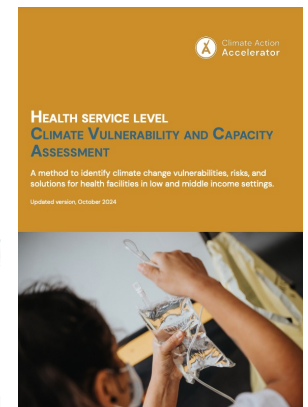
General guidance: Please answer questions on appropriate. This is a general questionnaire for all suppliers and some questions may not be relevant for some suppliers. E.g. water usage / wastewater management will not be material to most of the pharmaceutical manufacturers, as they are not focused on production.

General questions:

1. Does your company/ institution have a CSR / sustainability policy on the supply of its own supplies?
☐ Yes ☐ No
2. Do you discuss raw materials from regions that are under special protection (SAs) e.g. list of protected areas, WWF Global 200?
☐ Yes ☐ No
3. Please indicate the reporting period with month and year:
4. Are the answers reported below calculated for the whole company or just for specific business units, sub-product categories, ...?

Guidance: List of regions can be found on United Nations List of Protected Areas and WWF's Global 200 project.

Category	Sub-category	Value	Unit	Weighted Value	Weighted Unit
Energy	Electricity	1000	kWh	1000	kWh
	Gas	500	m³	500	m³
	Oil	100	liters	100	liters
	Coal	50	kg	50	kg
Water	Water	10000	liters	10000	liters
	Wastewater	5000	liters	5000	liters
	Water treatment	1000	liters	1000	liters
	Wastewater treatment	500	liters	500	liters

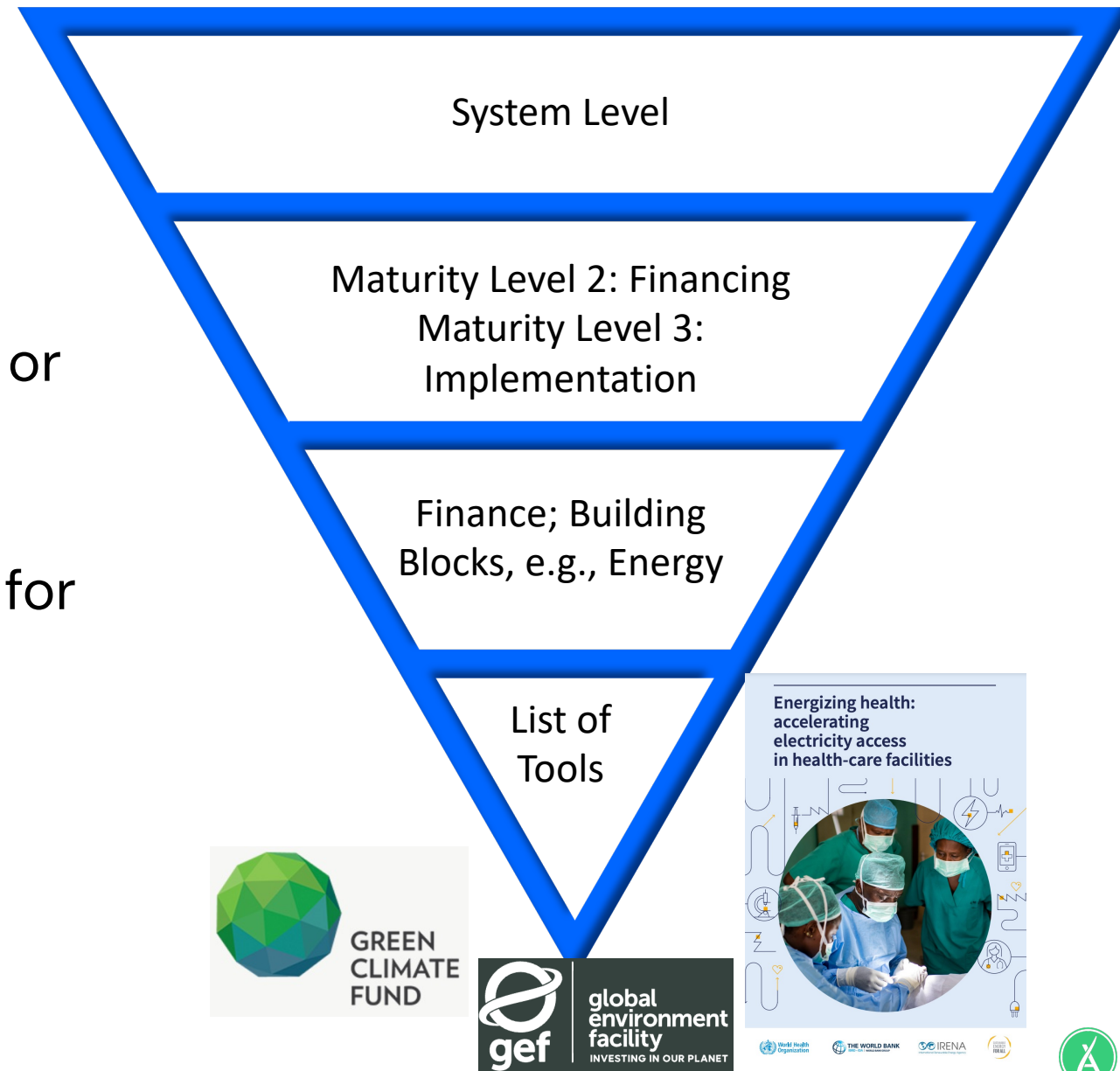


User Cases 2

Position: Person working in national or regional health authorities

Needs:

1. Finance – Funding opportunities for implementation of action plan
2. Thematic operational tools (e.g. electricity access)





Climate Action
Accelerator



2025 AMPLIFICATION INITIATIVES

Communities, Climate & Health policy, Public Development Banks

Influencing policy and systems

✓ FUTURE OF HOSPITALS AND HEALTH SYSTEMS:

- ❑ ensuring fit-for-future hospitals and health systems in low resources settings
- ❑ Climate Action Accelerator and Geneva Sustainability Centre co-lead a working group of on low carbon, resilient and sustainable healthcare models.
- ✓ Scientific communication and other (webinars, videos / podcasts, teaching and speaking events)
- ✓ Engaging with existing and emerging Communities of Action (**ATACH** ; One Sustainable Health for all Foundation)
- ✓ Policy dialogues and donor round-tables

Future of hospitals and health systems For people, places, and planet

A collaborative initiative to support a transformational agenda for hospitals and health systems in low resources settings.



Adresse e-mail | contact@climateactionaccelerator.org

LinkedIn | <https://www.linkedin.com/company/theclimateactionaccelerator/>

Site Web | www.climateactionaccelerator.org



Climate Action
Accelerator