

Webinar



How to halve an aid organisation's carbon footprint by 2030: Learnings from ALIMA's way forward.

February 3 2022
12:15-13:30 CET
13:15-14:30 GMT



THE CLIMATE ACTION
ACCELERATOR

Bruno Jochum
Founder & Executive Director



Henri Leblanc
Deputy Chief Executive Officer

Why is ALIMA taking action ?

**Taking stock
of the climate
emergency**

**Witnessing the
disproportionate
impact on Africa**

**The principle of
"Do no harm"**



**Solutions
do exist**

**Ambition to
transform
humanitarian
medicine and
be coherent with
our Charter**

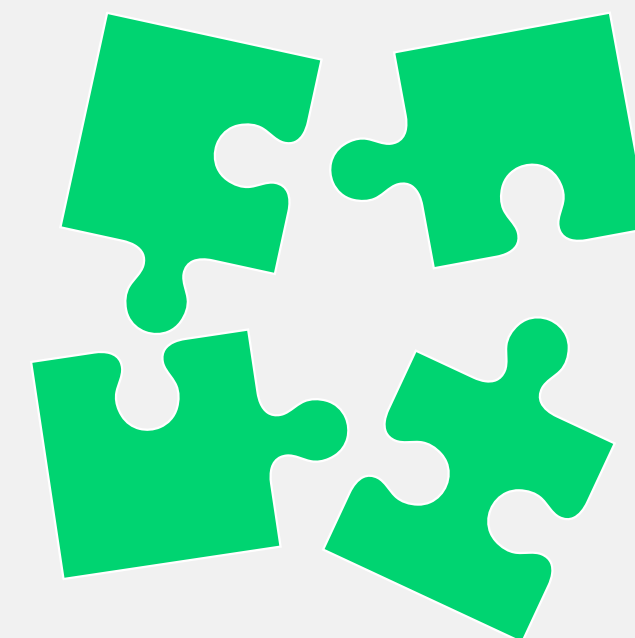


A prior strategic commitment from the organisation

Align the organisation around a shared environmental ambition.

- A debate in the General Assembly in October 2019 and October 2020.
- An amendment to the Charter

Integrating the decarbonisation target into a larger environmental approach



A more coherent approach for teams on the field.

- Addressing carbon emissions as well as:
- local degradation due to pollution
 - water and waste management and
 - plastic use.

The essential principles

Integrity and determination are essential to build a credible roadmap

The mobilisation of human, technical and financial resources for the implementation of projects

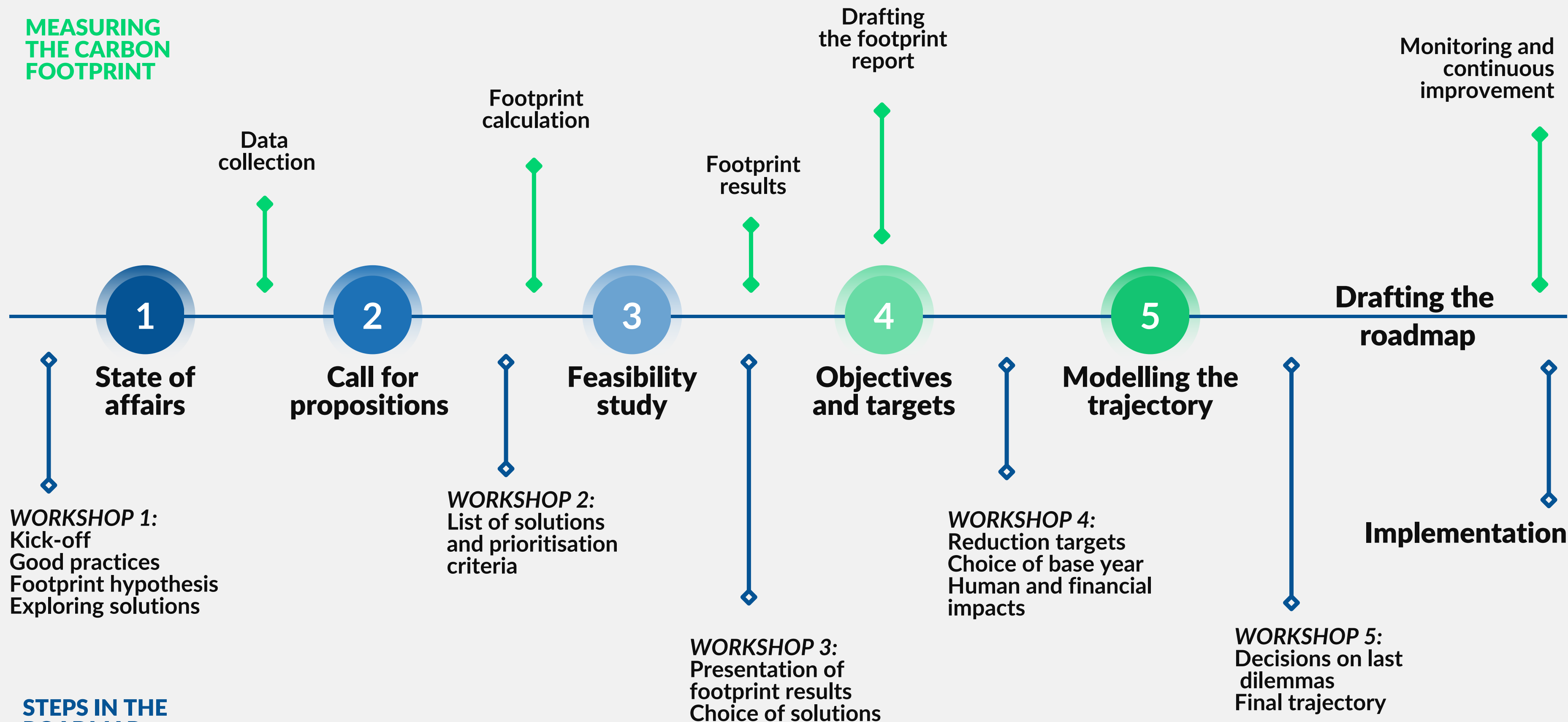


The humility inherent in a process of continuous learning and experimentation

The centrality of the social mission must not be compromised

Methodology of construction*

MEASURING THE CARBON FOOTPRINT



STEPS IN THE ROADMAP



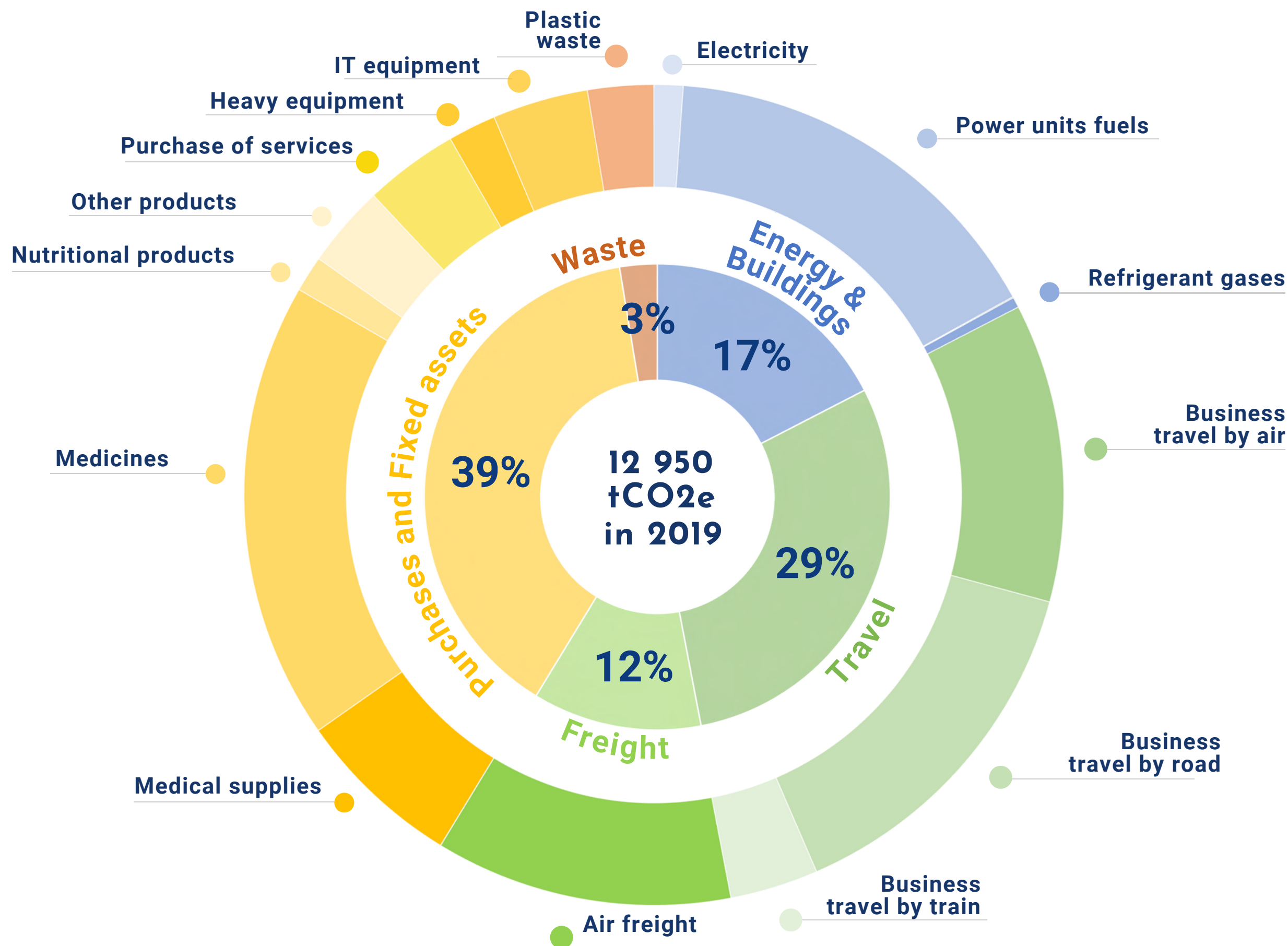
An aerial photograph of a large container ship sailing on a dark blue ocean. The ship is loaded with many colorful shipping containers in shades of blue, red, orange, and white. A smaller tugboat is visible in the lower left, leaving a white wake. The text "Reducing ALIMA's footprint through the roadmap" is overlaid in white, with a green rectangular highlight under the word "roadmap".

Reducing ALIMA's footprint through the roadmap



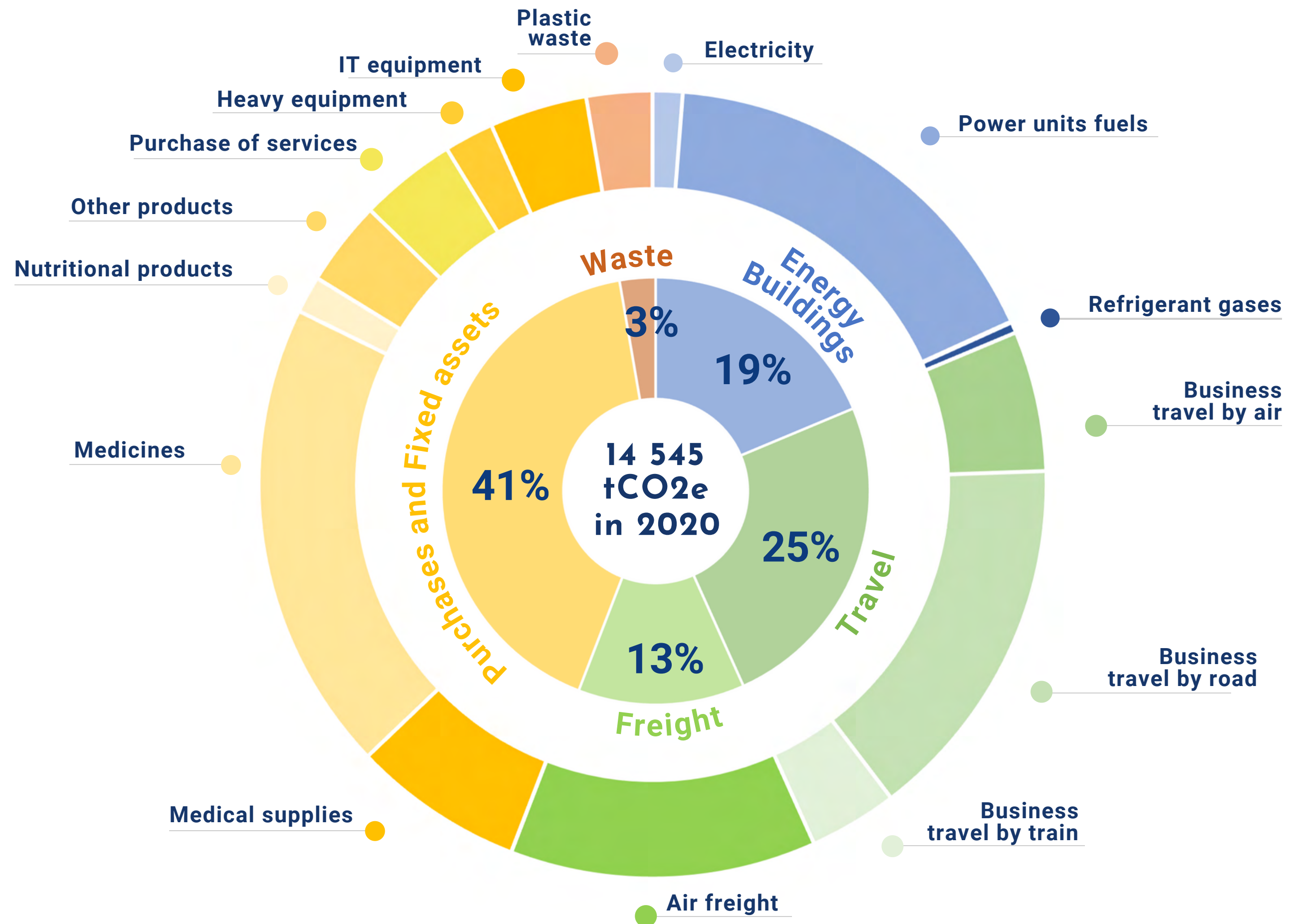
**ALIMA's
emissions
in 2019 are
concentrated
in 3 categories
that account for
97% of its
footprint:**

- Purchases and fixed assets
- Transports
- Energy in buildings

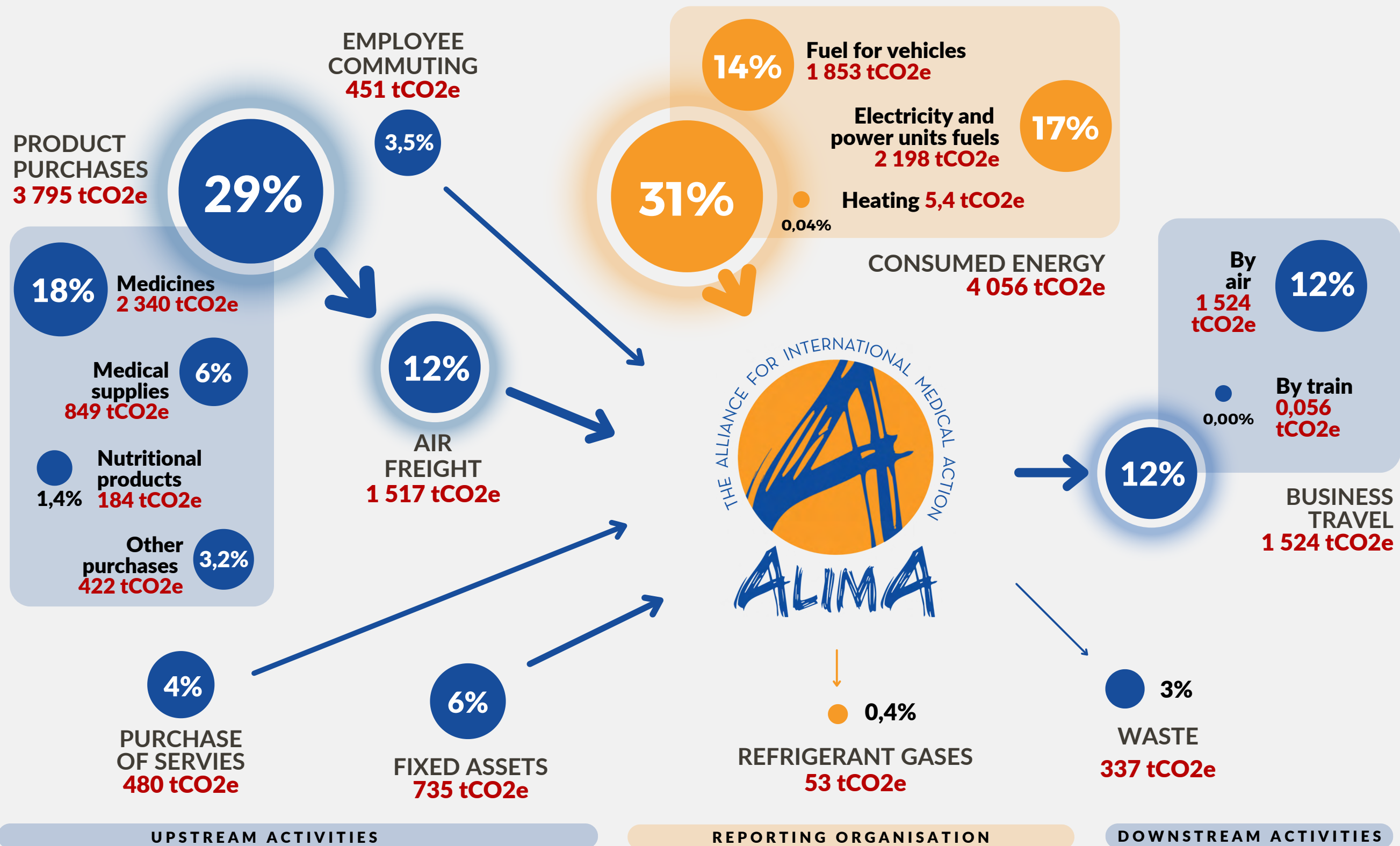


Estimation of ALIMA's carbon footprint in 2020

*Despite Covid,
still an increase*



ALIMA emission flows



69% of emissions were external to the organisation.

- 4 key flows:
- Product purchases through MSF Supply
 - Air freight
 - Fuel consumption from generators and cars
 - Business travel by plane

Solutions

TRANSPORTS

- 01** Increase the share of maritime freight in the transport of goods
- 02** Reduce air travel for business trips
- 03** Maximise shipping container load to reduce frequency of use
- 04** Reduce the volume, weight and packaging of goods.
- 05** Reduce the energy consumption of the vehicle fleet

PURCHASES

- 06** Reduce the environmental impact of purchasing
- 07** Reduce the number of travelling ton-kilometers thanks to regional purchasing
- 08** Replace plastic with alternative solutions

ENERGY AND BUILDINGS

- 09** Reduce energy waste
- 10** Reduce the energy consumption of buildings
- 11** Decarbonise electricity consumption
- 12** Avoid emissions of gases with very high warming potential
- 13** Reduce the energy consumption of equipments

WASTE AND ECOSYSTEMS

- 14** Reduce local pollution resulting from waste management
- 15** Reduce soil, water and air pollution from medical waste
- 16** Prevent and limit environmental degradation caused by projects
- 17** Preserve water resources

DIGITAL AND TRANSVERSAL

- 18** Reduce greenhouse gas emissions caused by digital technology
- 19** Systematise eco-responsible practices in daily life, promoting everyone's awareness and involvement
- 20** Move towards the realisation of a low carbon headquarters



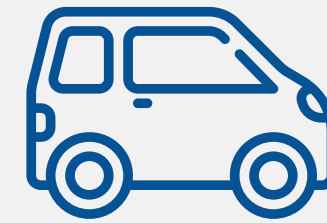
**More than 85%
of the carbon
reduction
over 10 years
is achieved
through 5 major
solutions.
These 5 solutions
are the key to
success:**



**Maximise the switch from air
to maritime freight for supply**



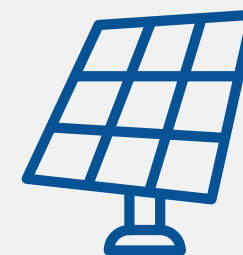
**Rationalise staff travel,
especially by air**



**Increase the energy efficiency
of vehicles**



**Implement environmental criteria
to guide purchasing decisions**



**Switch to renewable energy -
mainly solar photovoltaic energy**





**Replace plastic with
alternative solutions**



**Reduce local pollution resulting
from poor waste management**



**Reduce soil, water and air
pollution from medical waste**



**Prevent and limit environmental
degradation caused by projects**



Preserve water resources

**Solutions
considered
crucial for
reducing local
environmental
degradation**





The decarbonisation trajectory

Estimated year 2020 as baseline

Reduce by 62% in carbon intensity (planned target of 9,000 tonnes in 2030)

Reduce by 50% compared to baseline (ideal target of 7,300 tonnes in 2030)

The 20 solutions were selected according to:

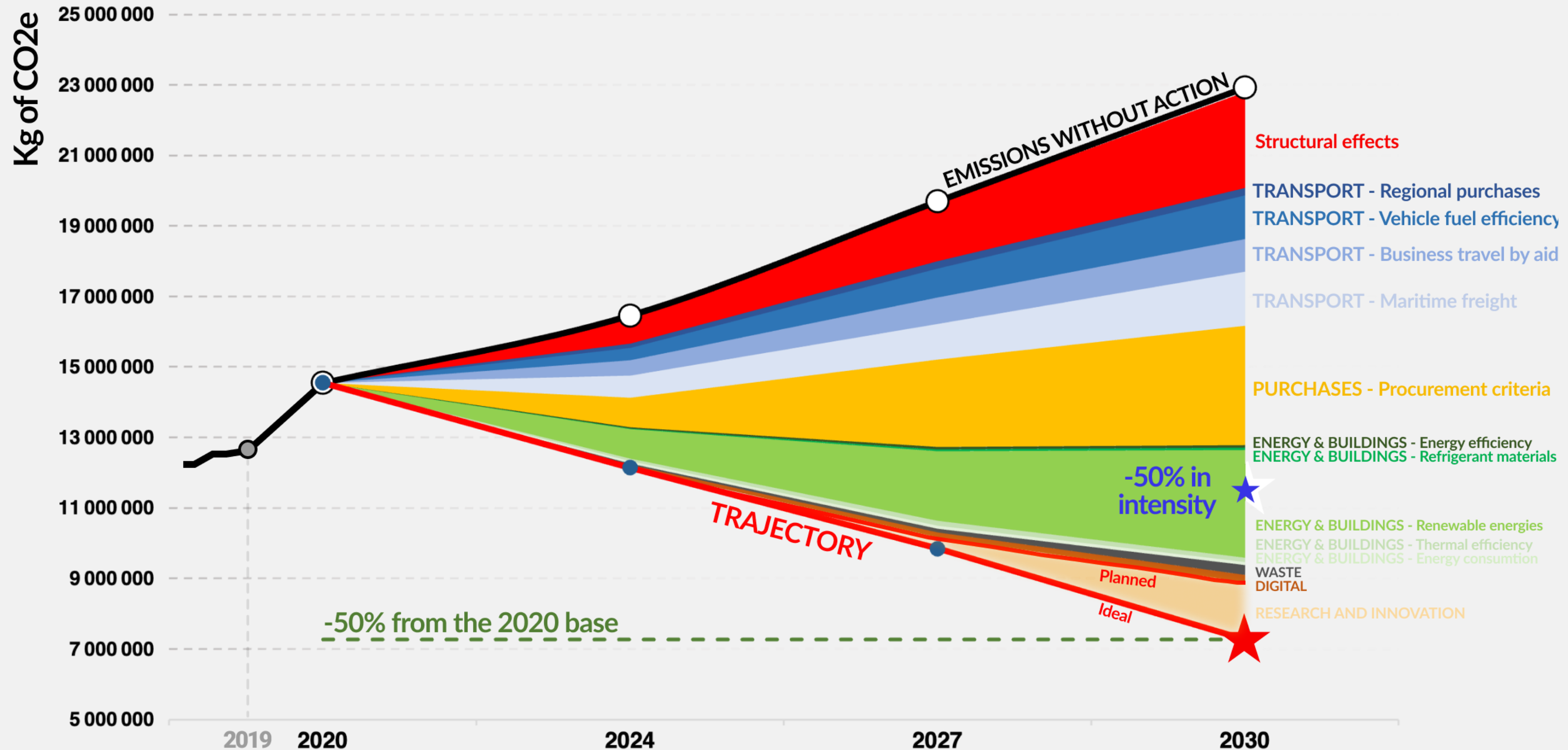
- **their environmental impact**
- **the efforts required to implement them**
- **their compatibility with operations**

Structural effects

**Research and innovation
(margin for progress)**



The decarbonisation trajectory



Solutions and **their indicators**

Increase the share of maritime freight in the transport of goods

EXPECTED OUTCOMES

In 2024, 35% of the forecasted tonne-kilometres transported by air freight are replaced by maritime freight and 70% in 2030, i.e. a reduction of 640 tonnes of CO₂e in 2024 and 1,530 tonnes of CO₂e in 2030.

INDICATORS

- Proportion of maritime and air freight volume in the total freight volume
- Proportion of country offices with an annual procurement plan

DATA TO COLLECT

- Tonne.kms transported by type of freight
- Tonne.kms per order type

Equipping ALIMA with the means to succeed

MEASURE

- Carbon emissions
- Quantities and types of waste produced

INTEGRATE

- Environmental project manager
- Project manager for sustainable procurement
- Expert in water, sanitation and waste
- External partnerships

TRAIN

- Staff has been trained
- Environmental aspects are integrated in logistics workshops and training

FINANCE

Over the years 2022-2024:

INVESTMENTS

3.1 million euros

SAVINGS

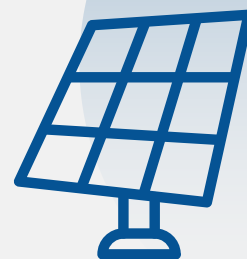
3.4 million euros

RETURN ON INVESTMENTS for photovoltaics

After 2-3 years
Depends on context

PURCHASING CRITERIA, TRAVEL POLICY AND REGIONALISATION

To be determined
in 2022-2023



ALIMA's 10 commitments

1

Each ALIMA member has the opportunity to **contribute to change** and to the implementation of environmentally friendly practices. We invest in training our members, giving them the tools and the means to act.

2

We integrate **environmental and climate issues into our humanitarian programs**, operational research and testimony

3

We will reduce our carbon emissions by **50% by 2030**, without purchasing carbon offset credits.

4

We are making **the choice to switch to renewable energy** to power our medical buildings, logistics stocks and offices. By 2030, 80% of the energy generated on our programs will be of renewable origin.

5

As of 2023, we are **implementing an Environmental Charter for Responsible Purchasing**, setting out the criteria that guide us in each of our purchasing decisions.

6

We systematically **assess the environmental impacts of our humanitarian actions**. By 2024, 100% of our projects lasting over three months conduct impact assessments and incorporate the best feasible options.

7

As of 2024, all our projects lasting over 3 months and all our offices have **waste management plans to reduce, recycle and dispose of waste responsibly**.

8

Our headquarters and coordination offices are leading by example by **implementing a 'zero waste - zero single use plastic' policy**. We ban the use of disposable plastic bags at ALIMA.

9

We act for the **promotion and dissemination of environmental actions** among the communities we serve and the health structures we accompany.

10

We lead our operational partners and the actors in our ecosystem along the path of a **credible environmental commitment**, by sharing our experience and tools and by testifying each year to our progress and challenges.



A wide-angle photograph of a flooded village. In the foreground, murky brown floodwater fills the frame. In the middle ground, several people are wading through the water. To the left, there are brick buildings and a blue-roofed house. To the right, there are traditional thatched-roof huts. The background shows more trees and a cloudy sky. The text 'The key learnings for implementation' is overlaid in white, with 'for implementation' underlined in green.

The key learnings for implementation



Internal levers are significant and can be turned into action

Focus on the few solutions with the greatest impact, avoid dispersion

Leadership and investment in people are the real key to success



Quantified indicators and intermediary milestones are essential

Avoided costs may compensate for a large part of the investment

A roadmap over 9 years must leave room for continuous learning and adjustment

Priorities in 2022



Carbon and
waste long-term
monitoring

Travel
policy

Procurement
charter and
sourcing of
key items -
preparation
for 2023

Solar
panels

Pilot health and
environment
projects

Freight and
order planning

National events
and workshops in
West Africa

Dialogue with
institutional
donors

A group of children are running along a dirt path in a rural, wooded area. The children are dressed in casual clothing, and the scene is captured in a warm, slightly desaturated color palette. The text 'Feedback: Questions and answers' is overlaid in the center of the image.

Feedback: Questions and answers



Do you have
any questions ?

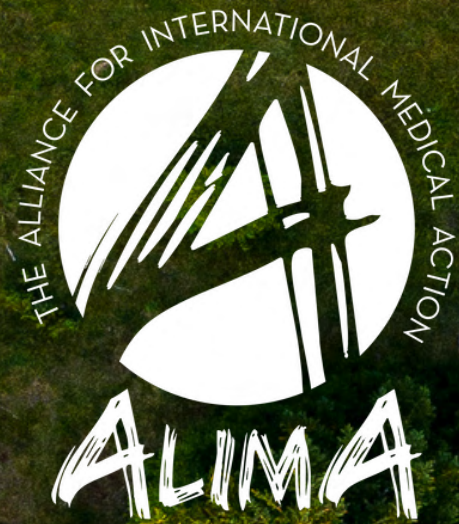
zaninka.ntagungira
@climateactionaccelerator.org

LinkedIn

[https://www.linkedin.com/company/
theclimateactionaccelerator/](https://www.linkedin.com/company/theclimateactionaccelerator/)

Site Web

www.climateactionaccelerator.org



THE CLIMATE ACTION
ACCELERATOR

